

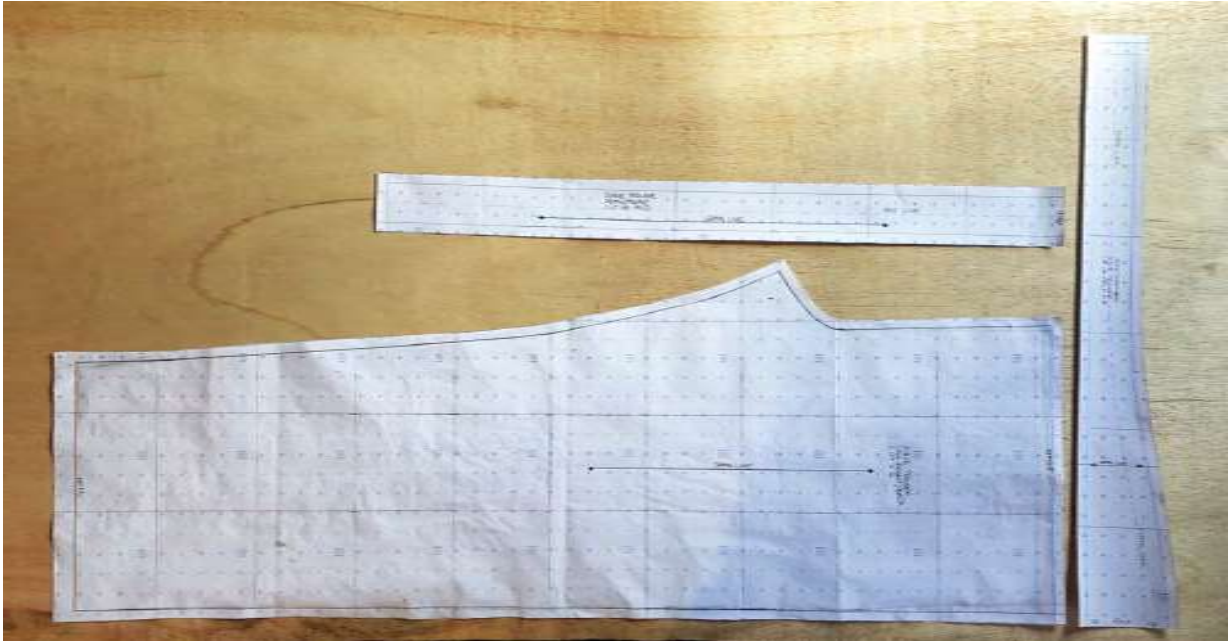
**LINGARDS**  
EST. 1957

# Pattern Making Guide Scrubs Trouser Pattern

Did you know we offer  
collection or postal delivery?

If you would like to order please email [workroom@lingardfabrics.co.uk](mailto:workroom@lingardfabrics.co.uk)  
and we can post to you or we will have collection available from our workroom  
on **Tuesdays** between **10am** and **1pm** every week.

Pattern making guide  
Scrubs trouser pattern



**Black pattern = size M/L**  
**Red pattern = size S/M**

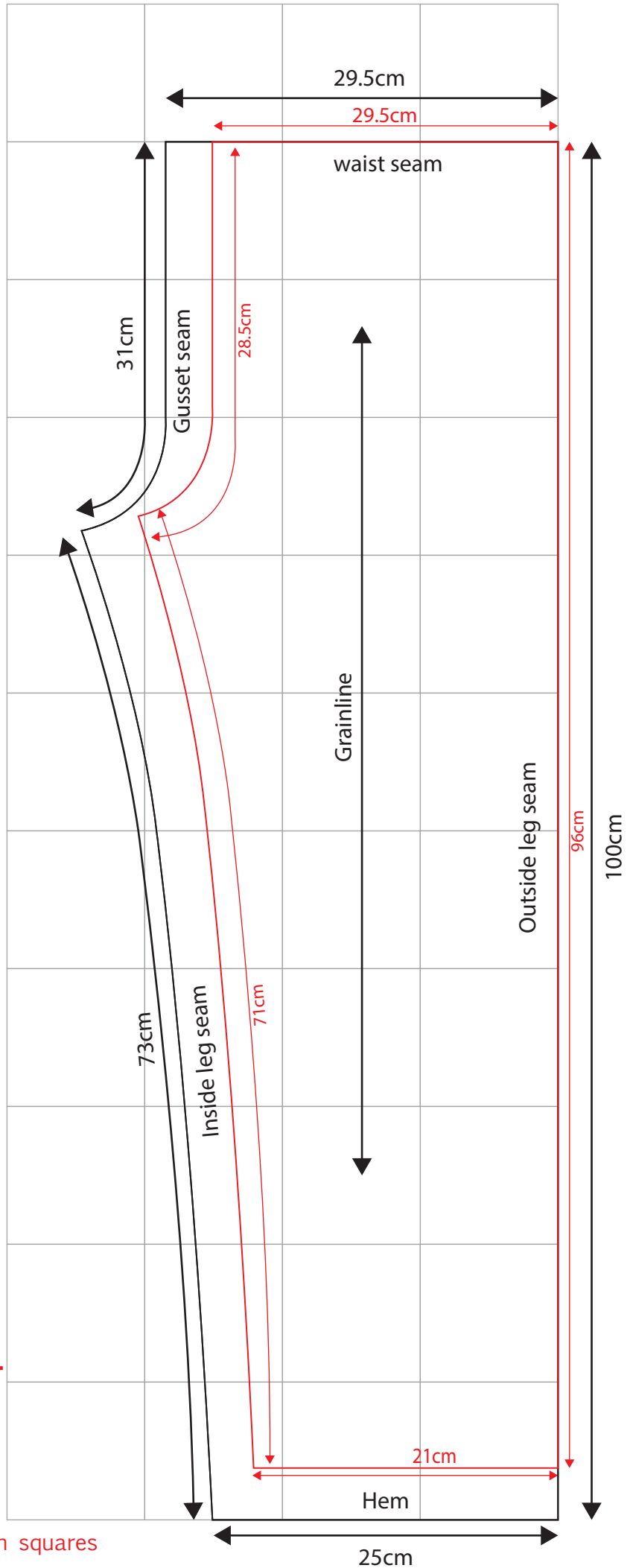


- Pattern pieces included;
- Scrubs trouser leg (cut x 4)
  - Scrubs trouser, waistband (cut x 2 on fold)
  - Scrubs trouser, drawstring (cut on fold)

- Create a 10cm square grid 4 x 11 and follow measurements as per drawing.
- When pattern is drawn out add 1cm seam allowance around full pattern except at hem.
- Seam allowance at hem = 2cm

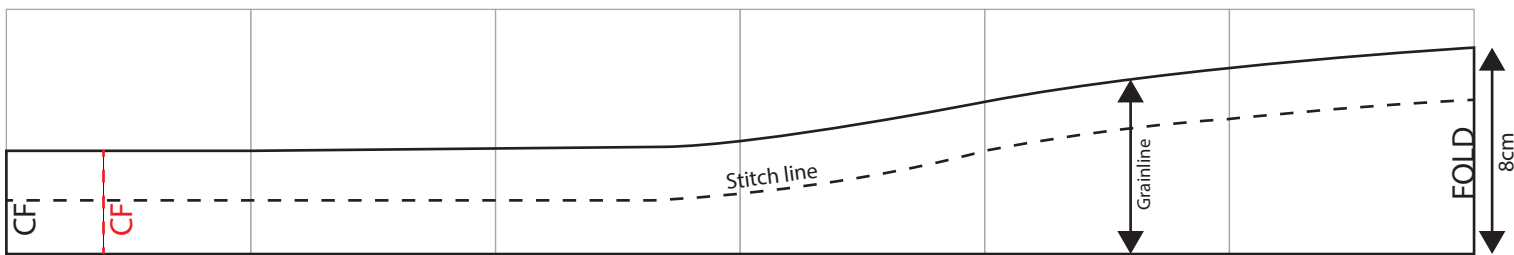
**Black pattern = size M/L**

**Red pattern = size S/M**



Grid should be scaled to equal 10cm x 10cm squares

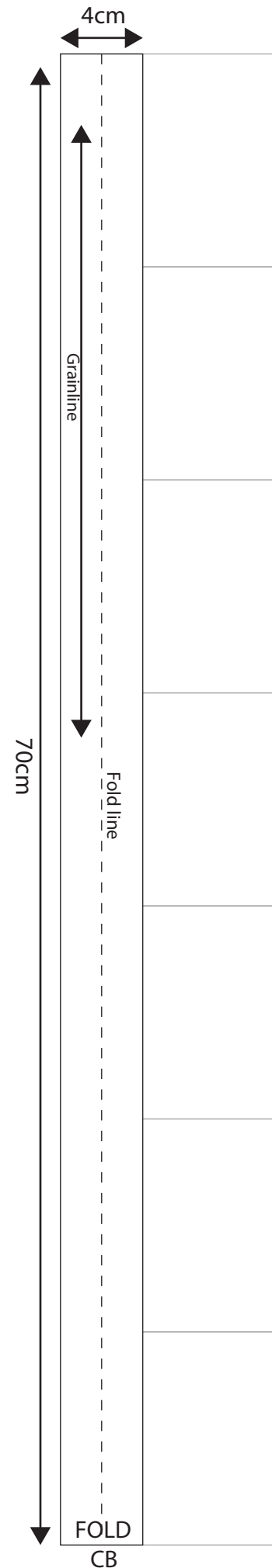
- Create a 10cm square grid x 6 and follow measurements as per drawing.
- When pattern is drawn out add 1cm seam allowance around full pattern except at at FOLD line and CF (Centre Front).
- Seam allowance at FOLD = None
- Seam allowance at CF = 2cm



**Black pattern = size M/L**

**Red pattern = size S/M**

- Create a 10cm square grid x 7 and follow measurements as per drawing.
  - When pattern is drawn out add 1cm seam allowance around full pattern except at FOLD/CB.
- \* If you have an existing drawstring, this pattern is not required



THIS PATTERN WORKS FOR BOTH SIZES = S/M AND M/L

Grid should be scaled to equal 10cm x 10cm squares