

LINGARDS
EST. 1957

Pattern Making Guide Scrubs Top Pattern

Did you know we offer
collection or postal delivery?

If you would like to order please email workroom@lingardfabrics.co.uk
and we can post to you or we will have collection available from our workroom
on **Tuesdays** between **10am** and **1pm** every week.

Pattern making guide
Scrubs top pattern

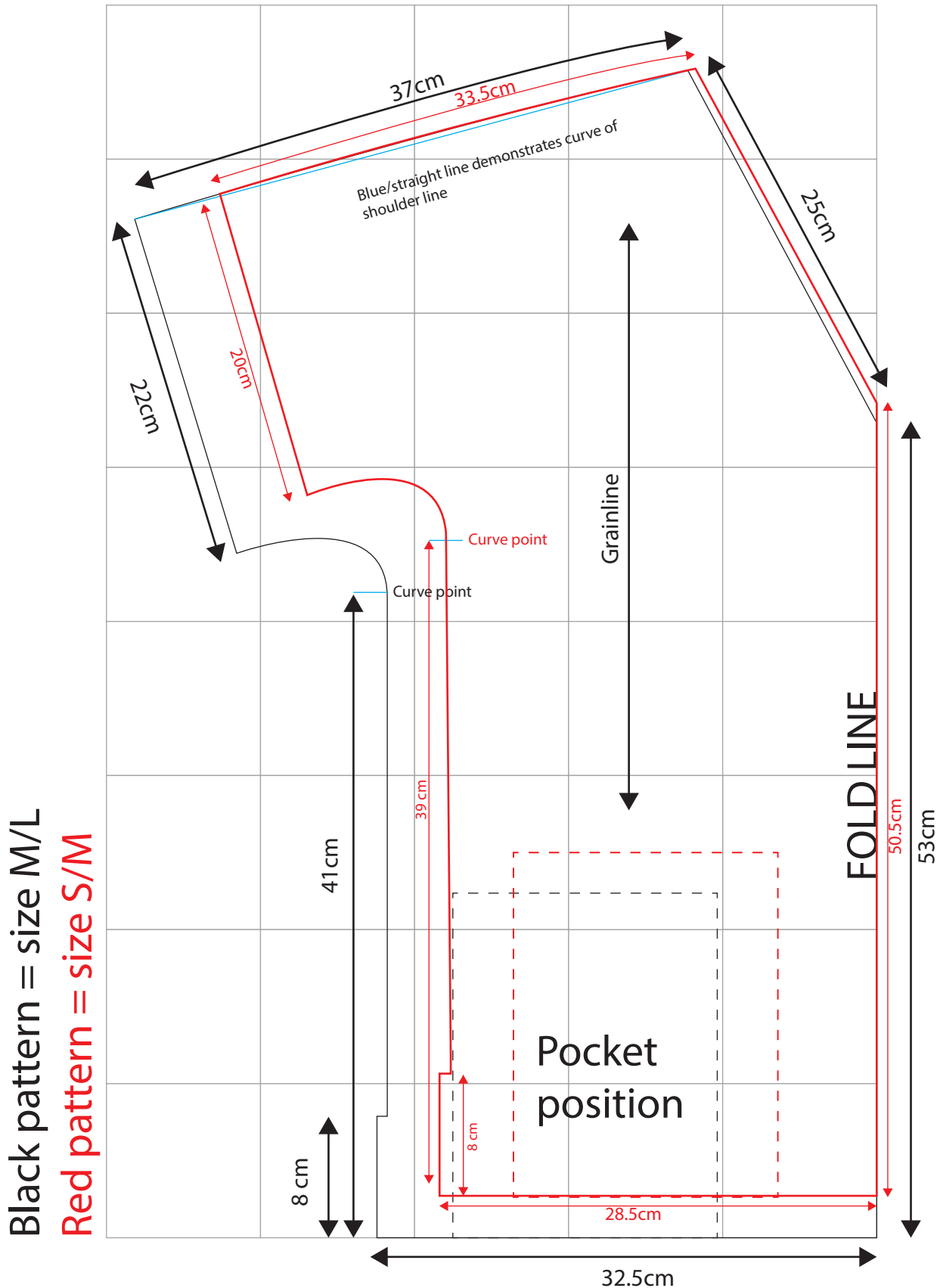


Black pattern = size M/L

Red pattern = size S/M



- Pattern pieces included;
- Scrubs top, front panel (cut on fold)
 - Scrubs top, back panel (cut on fold)
 - Scrubs top, pocket (cut x 2)
 - Scrubs top, back yoke (cut on fold)
 - Scrubs top, front neck binding (cut x 2)

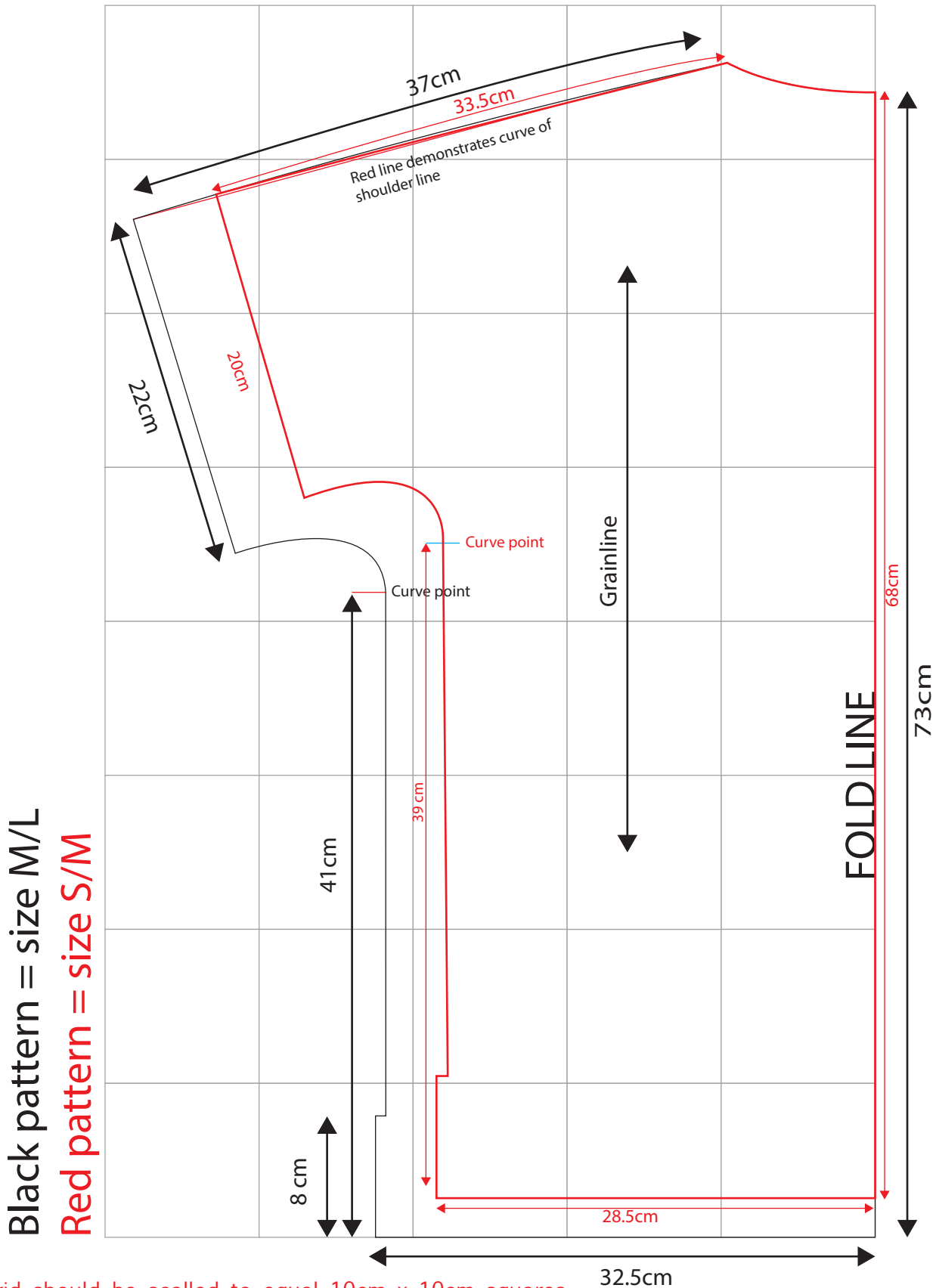


Grid should be scaled to equal 10cm x 10cm squares

- Create a 10cm square grid 5 x 8 and follow measurements as per above.
- When pattern is drawn out (as above) then add 1cm seam allowance around full pattern except at hem and sleeve add 2cm.
- Do not add seam allowance at fold line.
- Observe the subtle curve of the shoulder line
- Create under arm curve free hand.

Scrubs top, Back panel (back is identical to front except for neck line, ref page.3)

Cut on fold



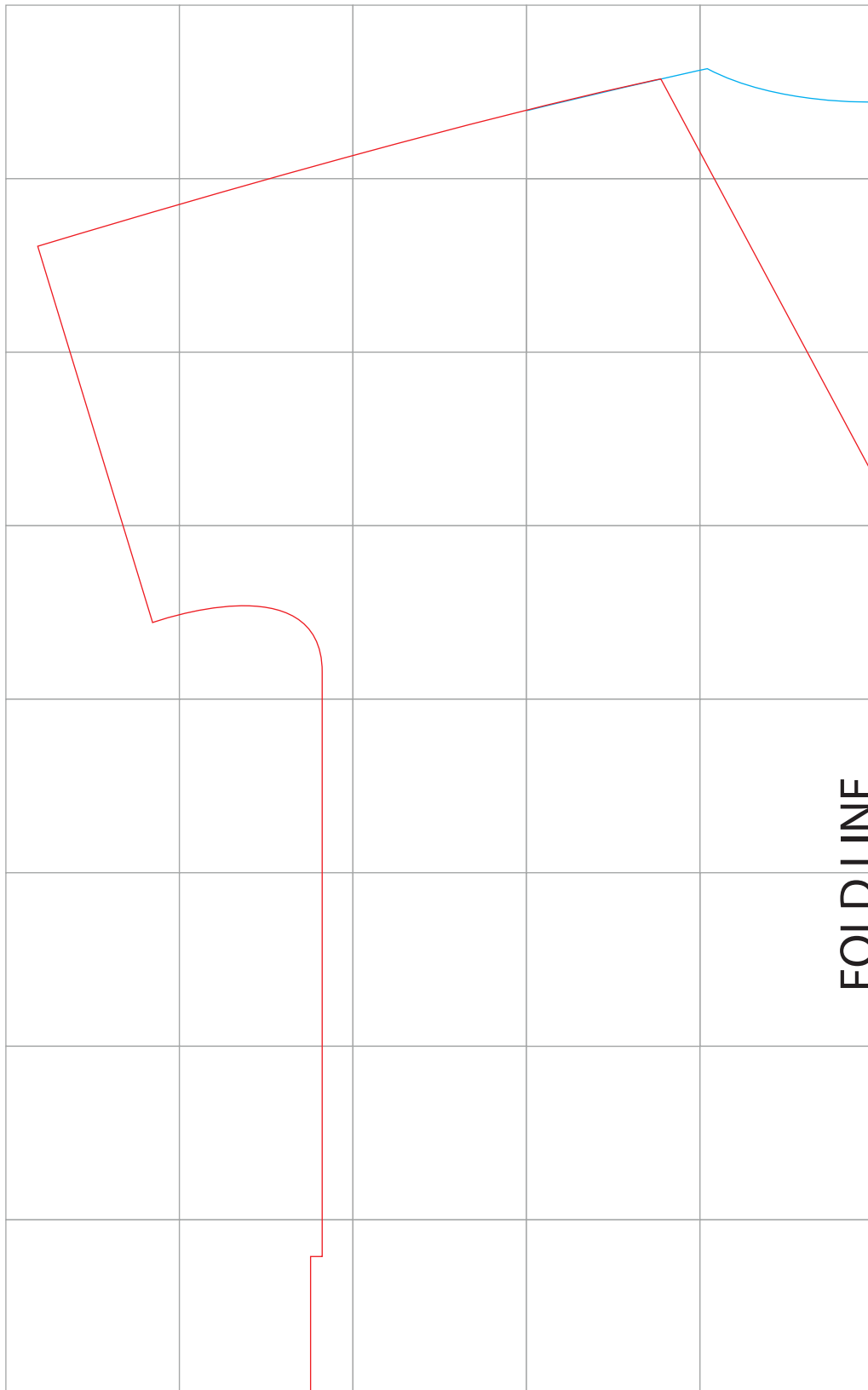
Grid should be scaled to equal 10cm x 10cm squares

- Create a 10cm square grid 5 x 8 and follow measurements as per above.
- When pattern is drawn out add 1cm seam allowance around full pattern except at hem and sleeve add 2cm
- Do not add seam allowance at fold line.
- Observe the subtle curve of the shoulder line
- Create under arm curve free hand.

Pattern making guide

Scrubs top, Front and back are identical shapes except for neckline

Cut on fold

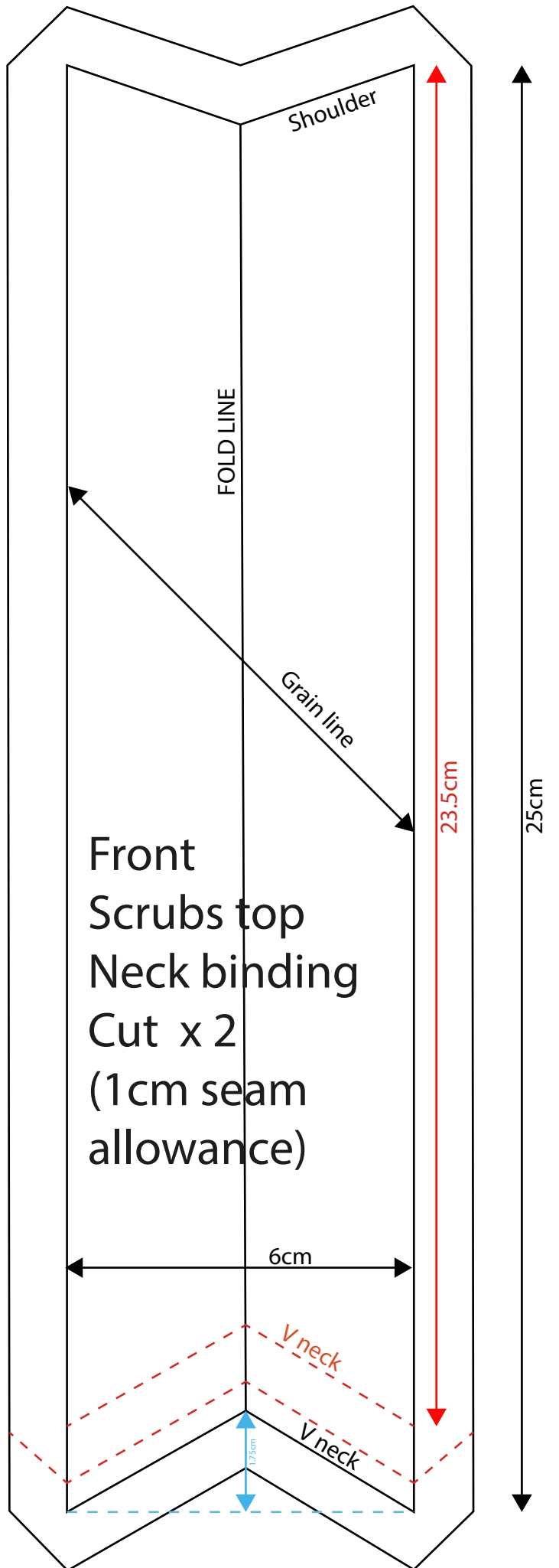


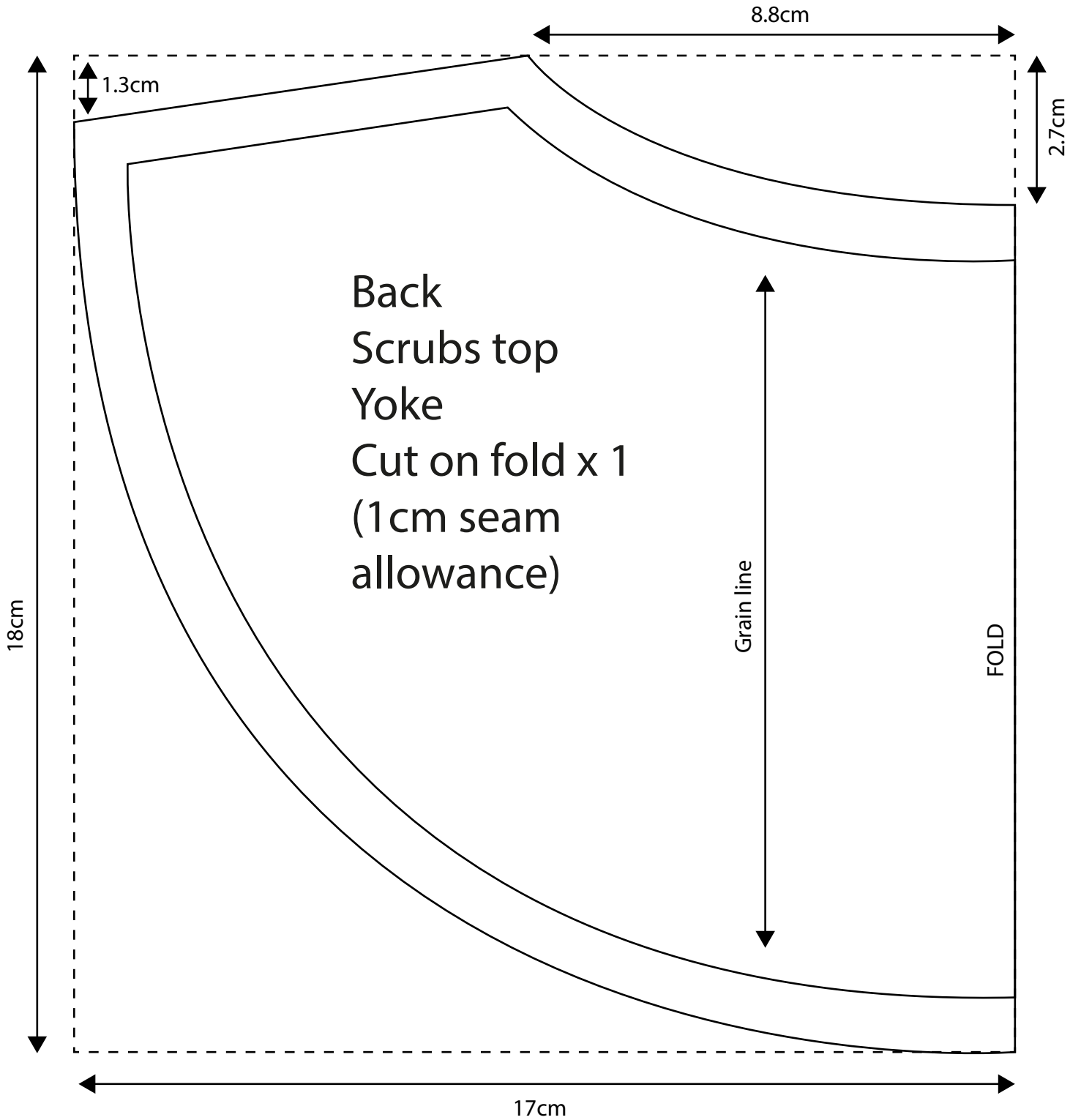
— = Front panel

— = Bback panel

* Grainline - For this pattern piece only you must cut on the bias. This means place the grainline in line with the fabric warp.

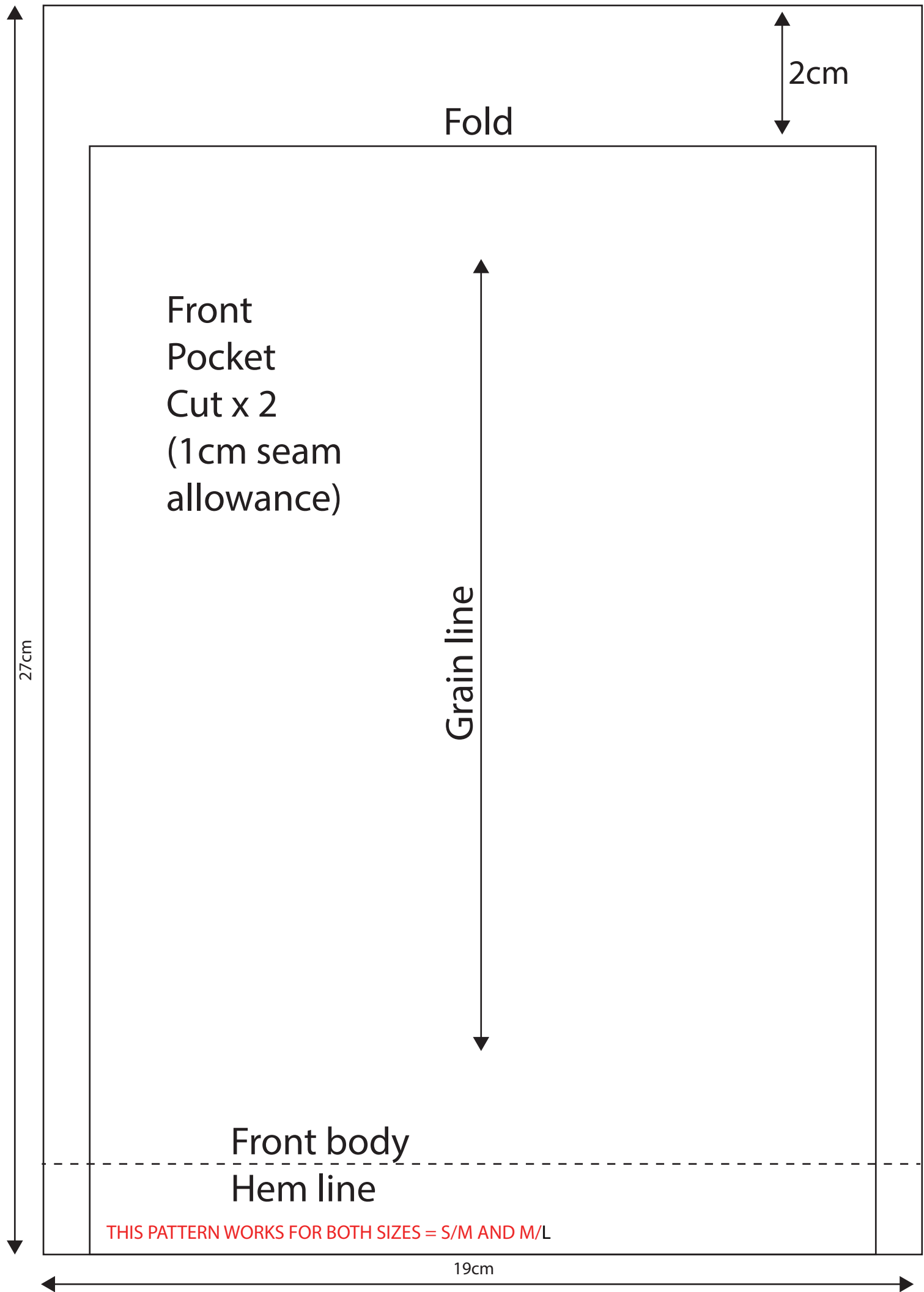
Black pattern = size M/L
Red pattern = size S/M





THIS PATTERN WORKS FOR BOTH SIZES = S/M AND M/L

* Print actual size and cut (fabric) on fold or follow measurements to recreate pattern.



2cm

Fold

Front
Pocket
Cut x 2
(1cm seam
allowance)

Grain line

Front body
Hem line

THIS PATTERN WORKS FOR BOTH SIZES = S/M AND M/L

27cm

19cm