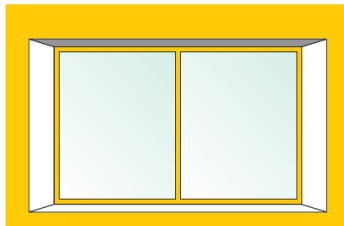


vertical blinds fitting instructions

HOW TO FIT MY BLIND

You will need to decide which method of fixing you require, either TOP FIX or FACE FIX.

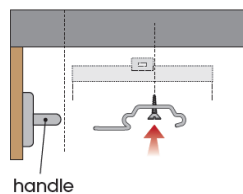
Top Fixing brackets are used for fixing into the ceiling or lintel and Face Fixing brackets are used to fix into the window frame (UPVC or Wood) you would always use face fix brackets when fitting outside the recess.



■ top fix ■ face fix

top fixing

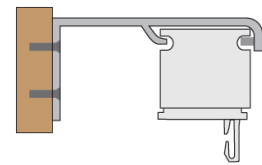
Take a measurement of how far your window handles protrude from your window frame (mm) then add 50mm to that measurement this is the distance from the window frame you will need to drill to avoid the louvres catching your window handles, your end two brackets need to be 50mm in from the end of the blind, space any remaining brackets evenly between these two brackets.



handle

face fixing

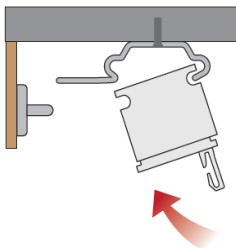
For recess blinds fix the brackets into the wall or window frame as closely as possible to the ceiling or lintel with the same spacing as with top fix brackets (no need to measure the handles as this bracket has a space between the window frame and the louvres). For exact blinds fix the brackets in the exact place above the recess that you took your original measurement from.



fitting the track

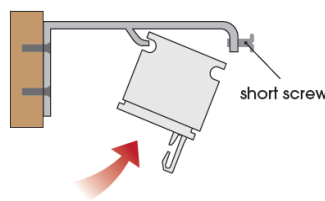
1 top fixing

The track must be set with the controls at the side ordered, tilt the track and locate the front lip of track into the front of the bracket push up until it clicks into position. Repeat this process with additional brackets.



2 face fixing

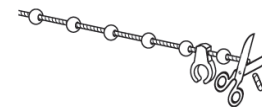
As with top fixing make sure the controls are on the side ordered and again tilt the track but the opposite way to locate the back section of the bracket and then push into position and tighten the short screw to lock the track into place. Repeat this process with additional brackets.



short screw

4 trimming the chain

You will probably have additional chain at both ends of the last louvre weight using a sharp pair of scissors you can cut the extra away, make sure you're only cutting excess chain outside the last louvre.



3 hanging the louvres

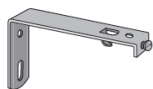
With our system all the louvres are already chained and indeed the cord weight is also in place. Firstly position the track cartridges at 90° to the track, take the louvre roll out of its plastic protection, remove the band and unroll them with the hanger at the top and the stabilising chains at the bottom, hang the louvres so that the seams are all facing the same way.

5 split bunch

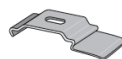
If you have a split bunch blind you will need to cut the chain between the middle two louvres in order for the blind to be able to draw to each side. Draw the blind about 18" apart and the middle two louvres will separate allowing you to easily cut the chain between them.

fittings

face fixing brackets



top fixing brackets



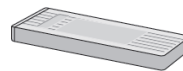
screws



rawplugs



cord weight



stabilising chains (x2)

